



Artifact donors from December 1st, 2011 to February 29th, 2012

County of Wetaskiwin Don Murphy	Martin Dyberg Fern Peterson	Elfriede Lange Paul Sweet	Virginia Lehman	Don MacKay
------------------------------------	--------------------------------	------------------------------	-----------------	------------

Thank you to the City of Wetaskiwin and the City Archives for their continuing support.

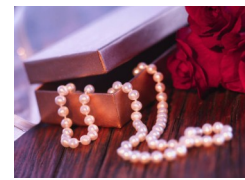
Thank you to the Alberta Museums Association for ongoing support.

Thank you to the County of Wetaskiwin for the Recreation Grant.

Thank you to the Wetaskiwin Credit Union for support of the Aspenland Project

Thank you to the Canadian Museums Association for support of our Young Canada Works Students

New items in the Gift Shop



Calendar of Events
Important Events to Note

- ~ UFA Travelling Exhibit
Until April 2, 2012
- ~ Volunteer Week
April 16 - 20
- ~ Pioneer of the Year
June 8, 7:00 pm
- ~ Aboriginal Day
June 21
- ~ Multicultural Day
June 27
- ~ Canada Day
July 1, 1:00pm - 5:00pm
- ~ Women of Aspenland 2012
October 20, 2:00 pm

We have very old sheet music, records, and dress patterns. To see any of these please phone the Museum.

Volunteer of the Year:
Congratulations Olive Jacobson

Olive is an expert in handling reception duties. Living in Wetaskiwin for many years and familiar with names and places, she's a great asset in assisting the museum-going public. Olive bakes for public events and assists the staff with preparations. She is steadfastly responsible for typing the large music inventory, the artefact inventory ledger, disbursement of the Museletter, and many other office duties.

Olive, friendly and dependable, is a welcome volunteer at the museum each week. You can expect a kind and welcoming greeting coming through the Heritage Museum doors.



Individual Cash Donations

Marvin Berger	Barbara & Andrew Dorosh	Violet Brandt
Martin Dyberg	Hedy & Alvin Klause	N. Roger MacEachern
Gordon & Jan Merrick	Gitta Proctor	Don Recknagle
A.B. Reynolds	Marg Sjostrom	

Memorial Donations

In Memory of Marilyn Drolet	Clifford Boss: Ronald & Helen Hagemann
Helen Penner	Janice & Gordon Merrick
C.R.French	John & Lois Warring
Irene Layzell	Karen & Dennis Potyondi
Oriole Wilson	Ron & Maureen Layzell
Cheryl & Dennis Emmerling	

In Memory of **Brent Lockhart:**
Patricia Petrich Gary Johnson
Ruth Nelson Sylvia & Helmer Larson

In Memory of **Caroline Shantz & Robert Westendorf:**
Donna Westendorf

In Memory of **Warna Moore:**
Lorraine Lowen

Quilt Raffle

\$2/ticket
Available at the Museum
Draw: October 20, 2012

Thank You Volunteers
Brenda Benedetto
Arlene Elliot
Syl Gauvreau
Marilyn Keller
Lorraine Lowen
Al Lund
Gitta Proctor



MUSE LETTER
Wetaskiwin & District Heritage Museum

5007 50 Avenue, Wetaskiwin, AB T9A 0S3
Phone: 352-0227 Fax: 352-0226 Email: wdbm@persona.ca
Website: www.wetaskiwinmuseum.com
Find us on Facebook.

VOLUME 28, ISSUE 1 First Quarter Edition March 2012

President's Message

To: _____

CTV's choice of our Women of Aspenland as a Hidden Gem in their January 24th Alberta Primetime caused a fair bit of excitement here. Peggy Emmett & Deb Lentz arrived for their interviews and because we remained open during filming, there were children in the Legacy Centre, the cameras captured them as well. Thankfully, friends on e-mail sent the footage out to others we had some good publicity for us and the city. I understand there is still a link to it if you go to www.albertaprimetime.com then Video Archives, Jan. 24.

Our Satellite exhibits featured on page 3 give us more visibility in the community. Thanks to Gitta Proctor who contributed her excellent design skills towards installing new exhibits in both the County office and Long-Term Care hallway. The six-week Library foyer exhibit on early Wetaskiwin, fabricated by Robert Reader, received a great deal of attention from the public.

We began 2012 with a host of new ideas for another exciting year at the Museum. We may not be able to match the importance of the 25th Anniversary of the museum and the Larson Gallery dedication but we will have great events nonetheless.

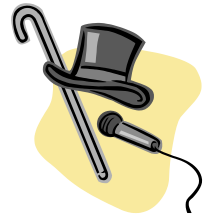
Entertainment in the early years of Wetaskiwin's history (1892-1939) will illustrate the old-time events that show our first residents were striving to bring the best of culture to this new West. The Opera Halls in 1901 and 1903 (Heric & Angus) in the town's centre along with at least two Ice Cream Parlours, Girlings, & Goulds, provided the settlers with fine performances and a place to meet for treats and parties. Beryl Ballhorn's ancestors were some of the first residents and saw the need for stores, a bakery and ice cream parlours. Rod French's grandfather R.M. Angus built a new Opera Hall after the Great Fire in 1903.

By 1913, Chatauquas were beginning to appear in towns and cities. The huge brown tents that were erected close to our present Immanuel Anglican Church (5103 46 Ave) was the venue for the travelling shows, some of which began in New York State. The program list would include serious lecturers along with choirs, orchestras, and something for the young people. You can look forward to some special events and a look at the Roaring Twenties, so stay tuned — you won't be disappointed!

The subject for this June's Pioneer of the Year will also be "Entertainment", someone who has volunteered his/her time and is still active in the community. Nomination forms are available at the museum.

Suggestions for Women of Aspenland are needed and will be handed to the jury in April so I hope many of you will phone or drop in with nominations for the 2012 exhibit.

Sylvia Larson



Another Feather in our Hat!

CTV2 – Alberta Primetime ‘Hidden Gems’ highlights the Heritage Museum’s Women of Aspenland

All eyes were on *Alberta Primetime* on Tuesday evening January 24 for the CTV2 broadcast of ‘Hidden Gems – Women of Aspenland’. Narrated by Sylvia Larson, the show introduced Peggy Emmett and Deb Lentz as representative of the documentation of Women’s history for the Wetaskiwin area. Peggy’s work with persons with disabilities and her catchy piano playing was part of her history of volunteerism. Sylvia cited Deb Lentz, a cancer survivor, as a foremost volunteer for families coping with cancer.

Sylvia also explained that the continuing exhibition relies on public nominations of candidates who are then screened by a jury with four ladies chosen each October – Women’s History Month, to be inducted into the Women of Aspenland Exhibit.

The exhibit now consists of over 70 archived profiles and photos.

Tea for Two & Lego Fun

Over the Christmas Holidays the museum provided two children’s programs to engage children before the new term started to help fill the long hours between Christmas and New Years. We had great attendance for both programs at 12 kids each.

The first one was an afternoon of dress-up, tea, and games called “Tea for Two”. We invited girls to come in with a favorite stuffy or doll for a tea party. The girls decorated cupcakes and shortbread cookies, made beaded necklaces and enjoyed a formal tea.

The boys came in with their tremendously creative Lego projects for “Lego Fun”. We had various team games and contests involving Lego building and they got to make their own ice cream sundaes.



Movie Afternoon

On Friday, December 30th, as a new program, Robert recreated the matinee experience, showing a period newsreel and cartoon before the main feature in the Larson Gallery with popcorn and other snacks. The film shown was the 1940 movie “Shop Around The Corner” with James Stewart and Margaret Sullavan.

A thank you to The Source electronics for loaning us use a great sound system so that our audience could clearly hear this delightful story.

The event was so enjoyed by those present that an encore was requested. As a result, we hope to host another soon so keep an eye for posters and on the Facebook page and museum website.



Wetaskiwin Public Library



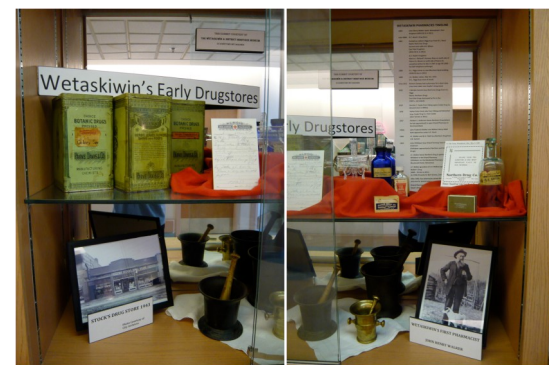
Wetaskiwin County Office



“Old Faithful”, the horse from our previous location, finally succumbed to old age and wear and tear from his harness. Helmer Larson, our building manager and exhibit carpenter decided a new horse was needed to fill our farmyard. After a while, a sturdy brown horse came galloping into the Children’s Legacy Centre. The children enjoy feeding him and he is ready for the plow.

What’s his name? Phone in or drop off your suggestions. How about Napoleon??

Satellite Museum Exhibits



Wetaskiwin Hospital Long-Term Care



Caretaker’s Suite in the basement of the Old Courthouse

UFA: 102 Years of Enriching Rural Life Exhibit Opening

The UFA Travelling Exhibit officially opened to the public on February 9th. The history specialist from Calgary, Barb MacLeod, addressed the gathering thanking the museum for planning the event and giving her the chance to meet some of the local members.

The opening was attended by Mayor Elliot, Lisa Dunn, Winfield, Ryan Crandell, Camrose and Cliff & Janet Stone as well as several other members from the area. Sylvia Larson opened the event and pointed out the artifacts in the museum collection which included E.R. Rasmuson’s 1909 share in UFA and a 1920 panorama of 1200 delegates at a conference in Calgary.



Lisa Dunn from Winfield & Barb MacLeod, UFA Historian, Calgary, joined us for the opening of the Anniversary Exhibit